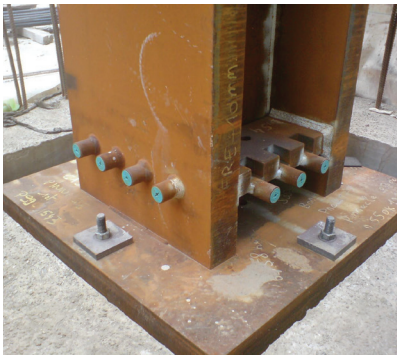




WELDABLE COUPLER



The WC series is designed to splice rebar to structural steel through a weldable coupler. The coupler has a machined taper thread at one end and a prepared weldable surface on the other. The taper thread design allows for quick alignment and engagement of the bar within the coupler. Weld size is to be determined by structural engineers in accordance with prevailing code, structural steel grade, and electrode type.



Features and Benefits

- Can be used in a wide variety of global rebar grades and deformation patterns
- Meets or exceeds international building codes including ACI 318 Type 1 & Type 2, BS8110, DIN 1045, Hong Kong Building Department Type 2 and many others
- Machined from weldable steel (A.I.S.I 1018, 1030 or 1035)
- Taper design allows for quick alignment and eliminates cross threading
- Installs quickly with taper thread
- Beveled groove allows for electrode access for full welding

Typical Applications

- Connecting rebar to structural steel sections or plates
- Composite construction
- Stanchion of composite columns



Part Number	US Rebar Size	Metric Rebar Size	Canada Rebar Size	L1 (in)	L1 (mm)	D1 (in)	D1 (mm)	D2 (in)	D2 (mm)	BD1 (in)	BD1 (mm)	Weight (lbs)	Weight (kg)
WC13	#4	13mm	10M	1.61	41	1.00	25	.73	18	.87	22	.2	.09
WC16	#5	16mm	15M	1.65	42	1.00	25	.73	18	1.10	28	.2	.09
WC19	#6	19mm	20M	2.17	55	1.18	30	.91	23	1.30	34	.6	.27
WC20	-	20mm	-	2.17	55	1.18	30	.91	23	1.30	34	.6	.27
WC22	#7	22mm	-	2.36	60	1.25	32	.80	20	1.30	34	.7	.31
WC25	#8	25mm	25M	2.52	64	1.58	40	1.12	28	1.51	38	.9	.41
WC28	#9	28mm	-	2.68	68	1.58	40	1.05	27	1.70	43	.9	.41
WC32	#10	32mm	-	2.95	75	2.00	51	1.38	35	1.88	48	1.6	.71
WC36	#11	36mm	35M	3.23	82	2.00	51	1.27	32	2.18	55	1.7	.76
WC40	-	40mm	-	3.74	95	2.36	60	1.64	42	2.72	69	2.9	1.32
WC50	-	50mm	-	4.49	114	2.95	75	2.09	53	3.33	84	5.4	2.45